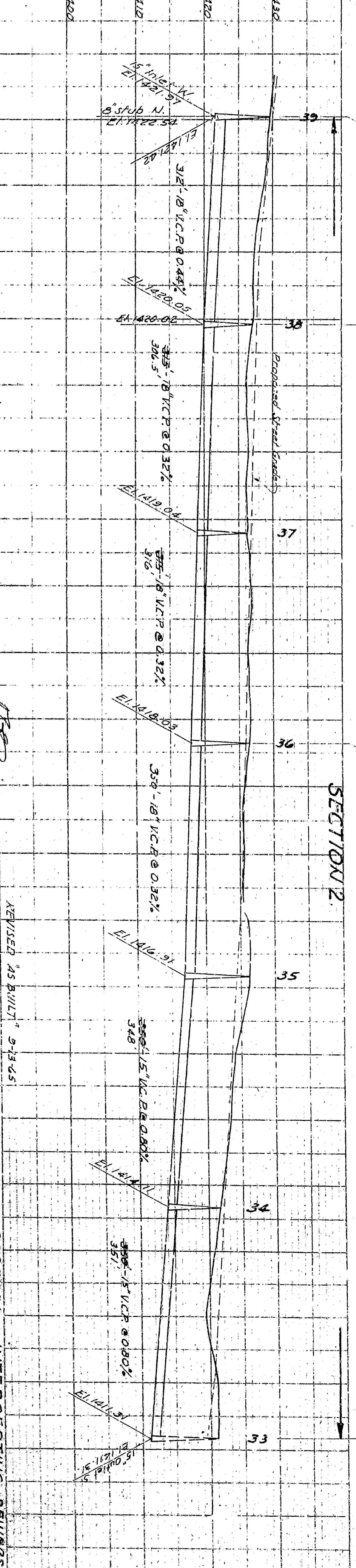
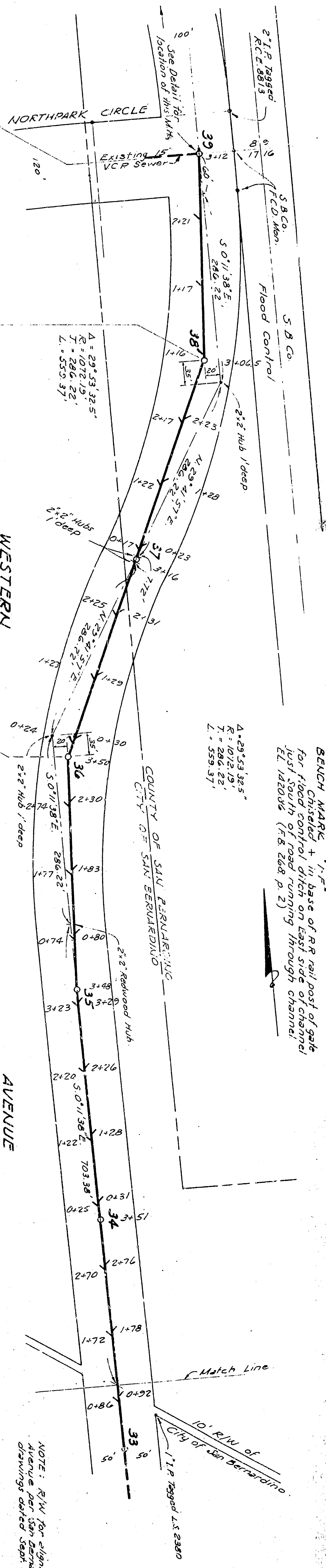
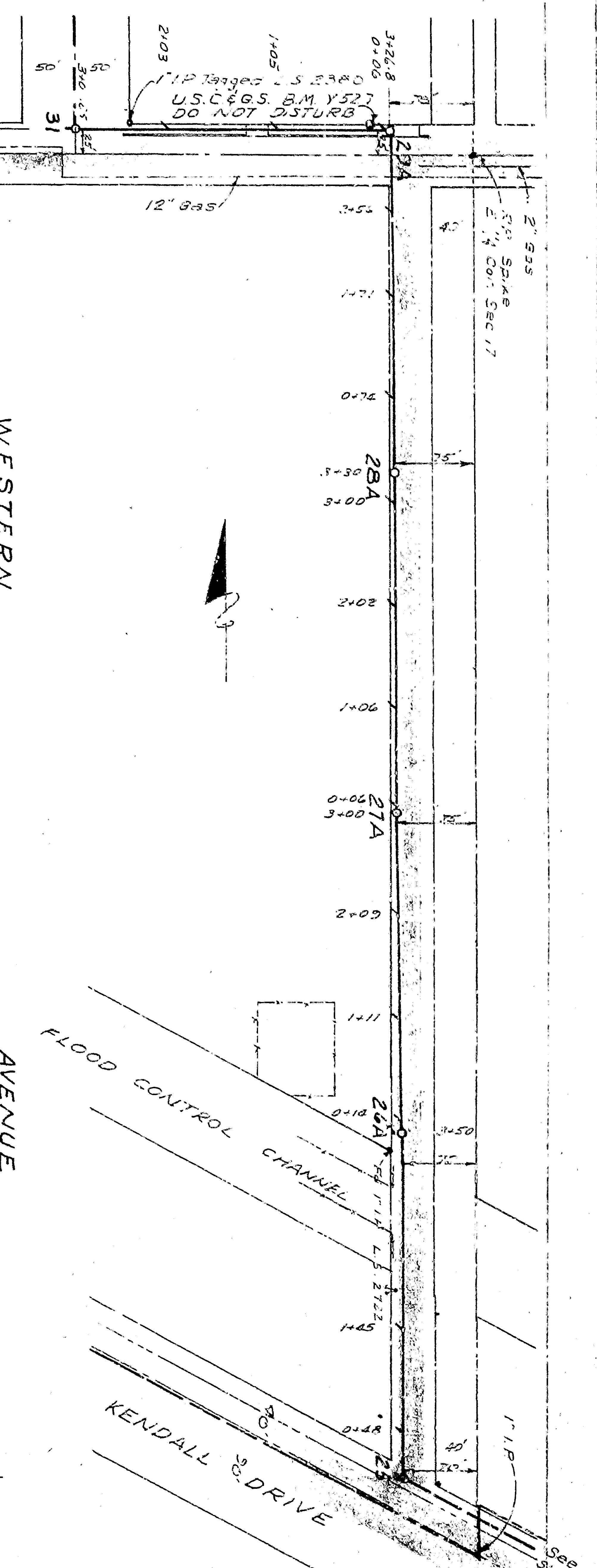
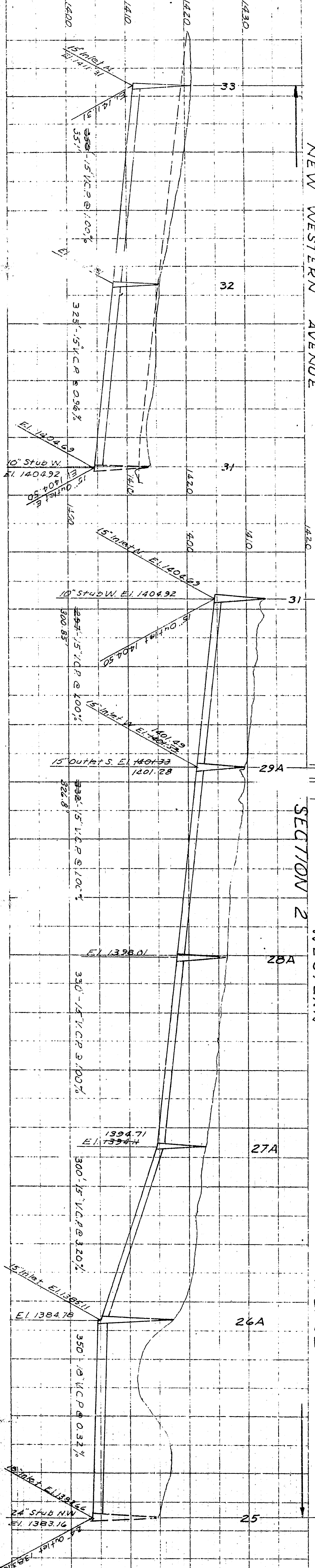
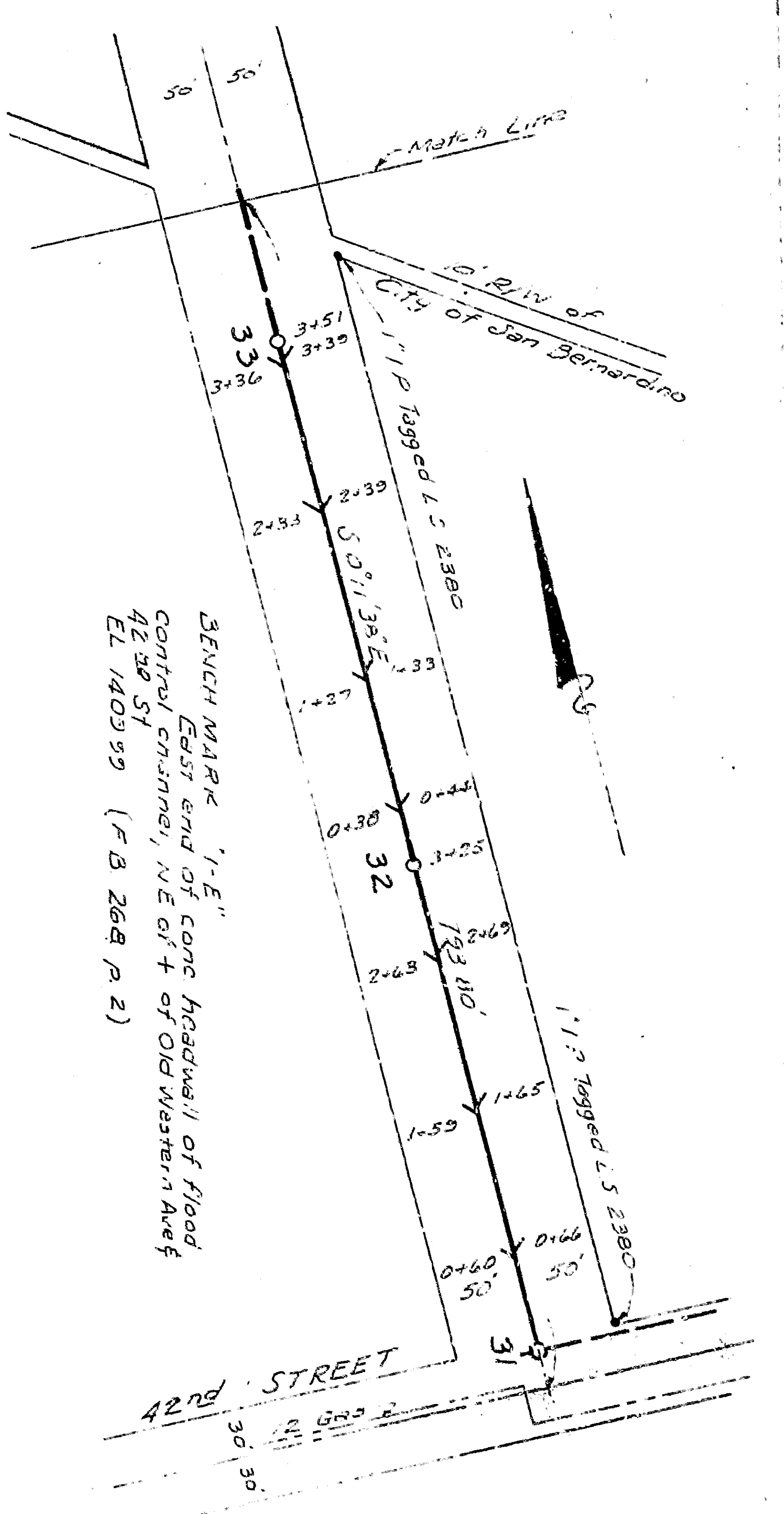
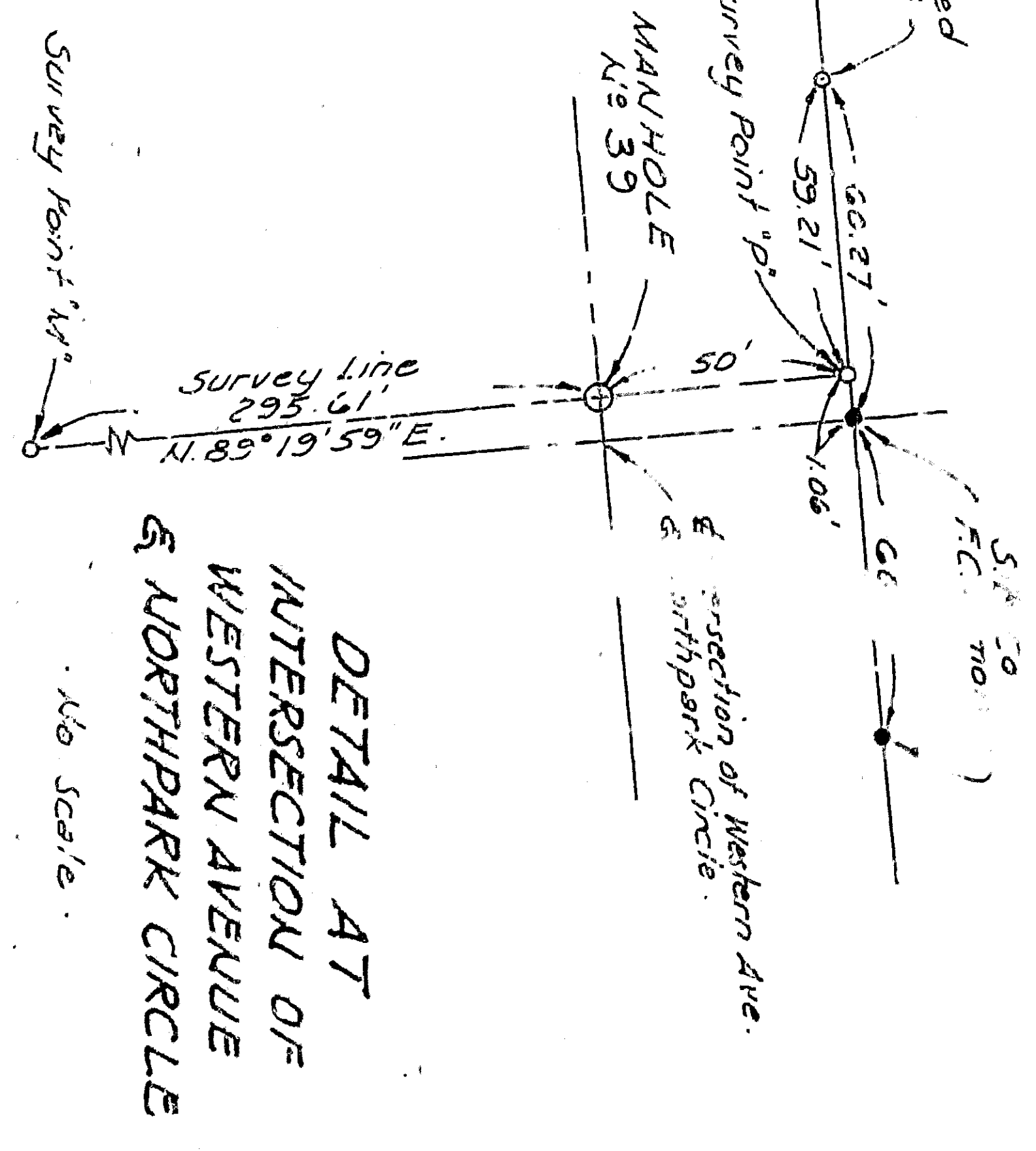


PROFILE
 SURVEYED
 NOTED
 NOTE BOOK
 CHECKED
 No. 10550
 DATE 10/15/55

PLAN
 SURVEYED
 NOTED
 NOTE BOOK
 CHECKED
 No. 10550
 DATE 10/15/55



NOTE: At the crossing of the flood channel between 41st 25 and 41st 26 the following D.C.C.D. restrictions on the ...
 1. In the event that said installation is performed during ...
 2. The channel shall be maintained in a condition ...
 3. The channel shall be maintained in a condition ...
 4. The channel shall be maintained in a condition ...
 5. The channel shall be maintained in a condition ...

NOTE: R/W for alignment of Western Avenue from San Bernardino to 42nd St. shown on 1944 City ...

PLANS & PROFILES INTERCEPTING SEWERS
 SAN BERNARDINO CALIFORNIA
 SHEET 3